



Madison, Wisconsin

CITY OF MADISON

CITY ENGINEERING DIVISION

DEPARTMENT OF PUBLIC WORKS

PLAN OF PROPOSED IMPROVEMENT

STRICKER POND FOREBAY DREDGING

INDEX OF SHEETS

SHEET NO. D-1 TO D-3	DETAILS
SHEET NO. EX-1	EXISTING CONDITIONS
SHEET NO. S-1	SITE PLAN
SHEET NO. GR-1	GRADING & EROSION
	CONTROL PLAN
SHEET NO. U-1 TO U-5	UTILITY PLANS
SHEET NO. U-5	STORM SCHEDULE
SHEET NO. X-1 TO X-3	CROSS SECTIONS
SHEET NO. MN-1	MAINTENANCE PLAN (CITY USE ONLY)

CITY PROJECT NO. 15697
CONTRACT NO. 9657

PROJECT
LOCATION



PUBLIC IMPROVEMENT PROJECT
APPROVED

APPROVED DATE

BY THE COMMON COUNCIL
OF MADISON, WISCONSIN

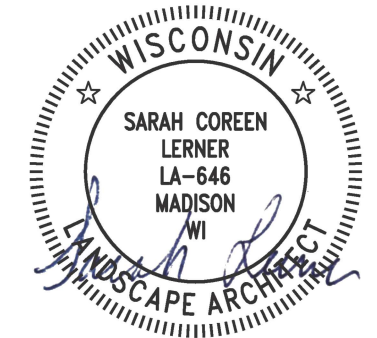
PUBLIC IMPROVEMENT DESIGN
APPROVED BY:

08/14/2025

City Engineer

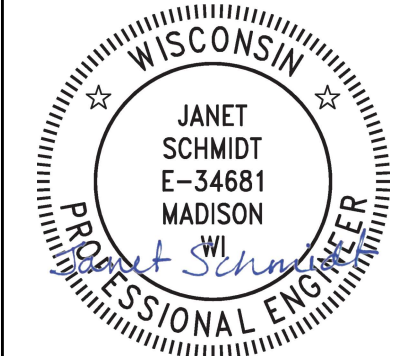
Date

POND DREDGING DESIGNED BY::



08/14/2025

STORM SEWER
DESIGNED BY:



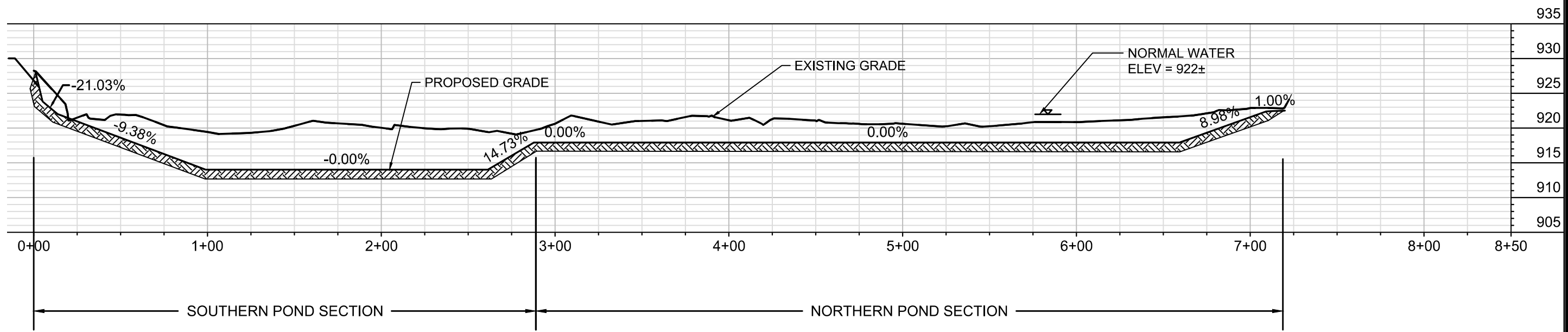
08/14/2025

PLOT SCALE: 1:1_XREF

PLOT NAME: ---

REV. DATE: 8/8/2025 10:05 AM

ORIGINATOR: CITY_OF_MADISON



PROFILE VIEW OF POND FROM 0+00 - 8+50

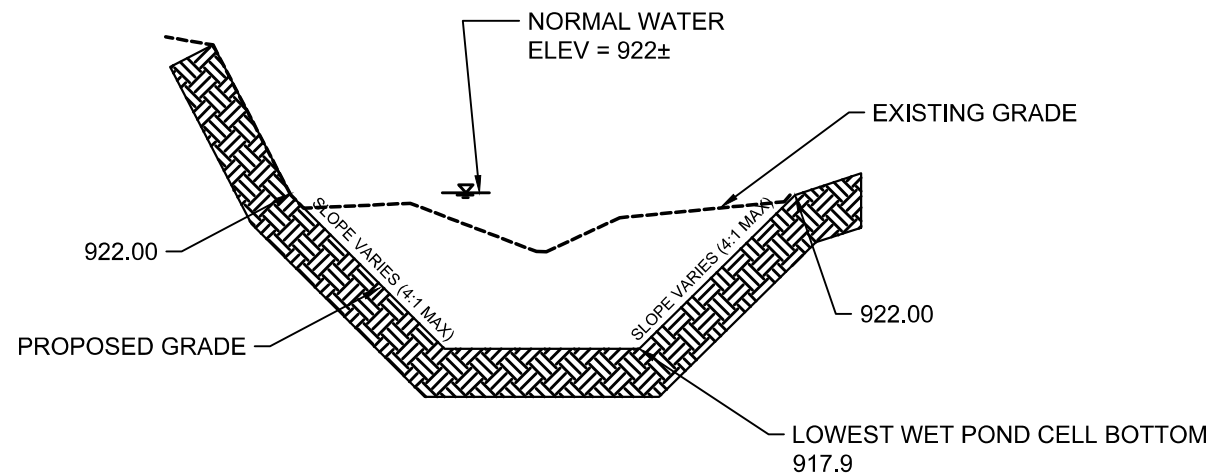
MARK	REVISION	DATE	BY
15697 <td>Designed By: SCL <td>Date: 8/10/2025 2:36 PM <td>Scale: 1:80</td> </td></td>	Designed By: SCL <td>Date: 8/10/2025 2:36 PM <td>Scale: 1:80</td> </td>	Date: 8/10/2025 2:36 PM <td>Scale: 1:80</td>	Scale: 1:80
			D-1

15697
MADISON, WI
CONTRACT NO: 9657

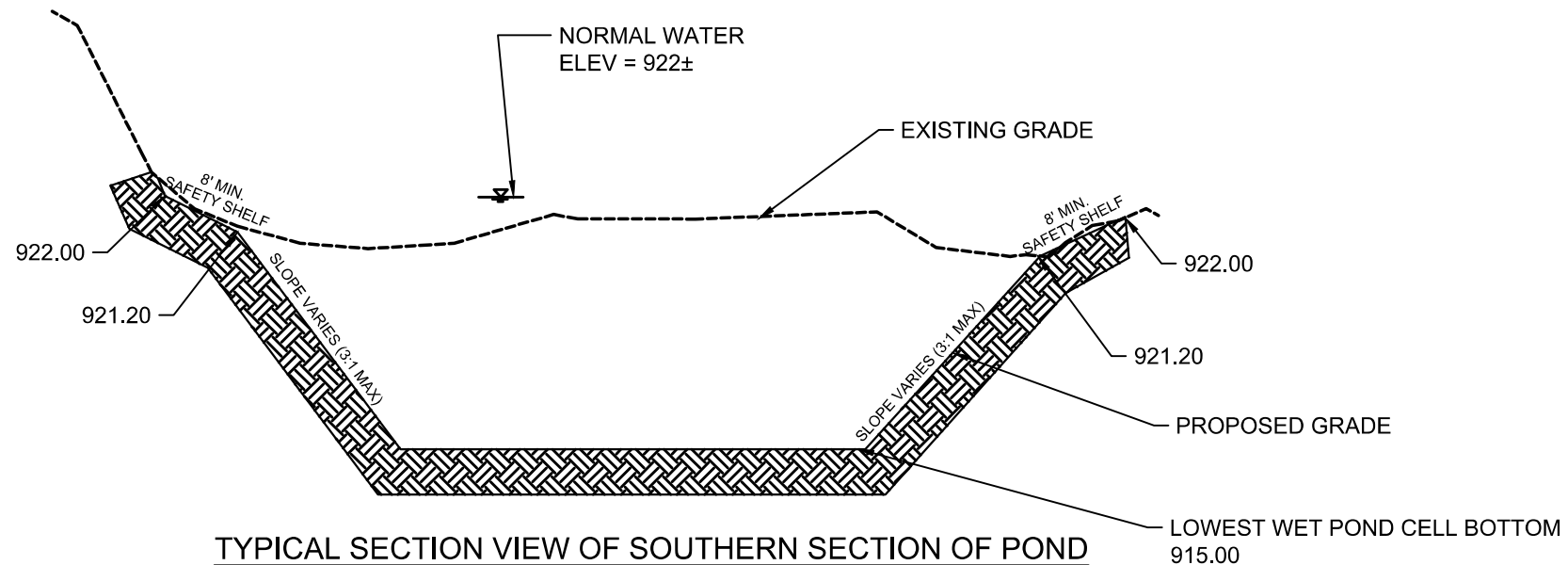
DETAILS
STRICKER POND FOREBAY DREDGING
M:\DESIGN\Projects\15697\CAD\Storm\15697Storm.dwg



15697
D-1



TYPICAL SECTION VIEW OF NORTHERN SECTION OF POND
(SECTION VARIES IN THE FIELD)
PROFILE VIEW



TYPICAL SECTION VIEW OF SOUTHERN SECTION OF POND
(SECTION VARIES IN THE FIELD)
PROFILE VIEW

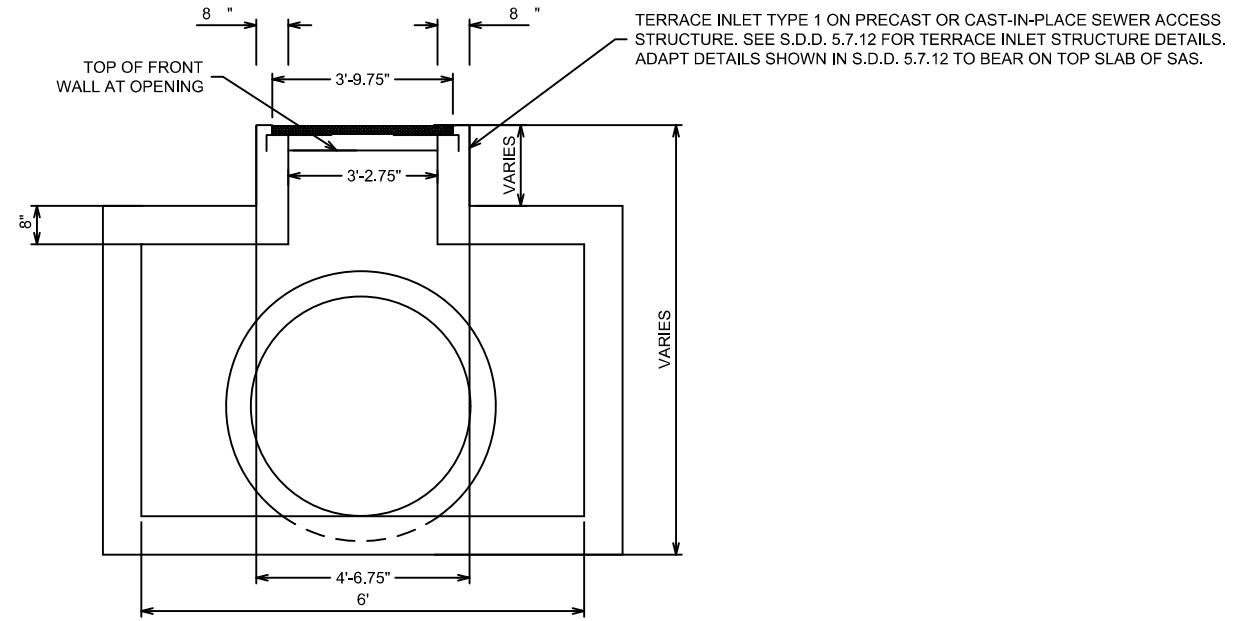
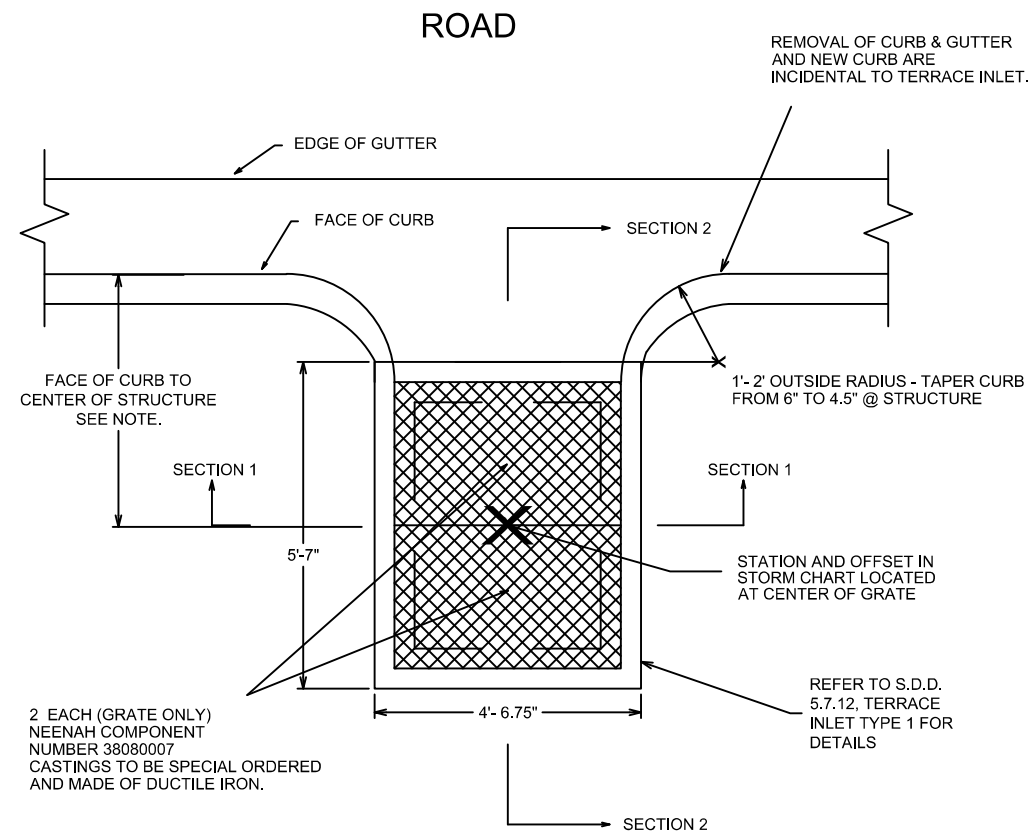
MARK	REVISION	DATE	BY
15697	8/10/2025 2:36 PM		
Designed By: SCL			
			Scale: 1:80
			EX-1

15697
MADISON, WI
9657
CONTRACT NO:

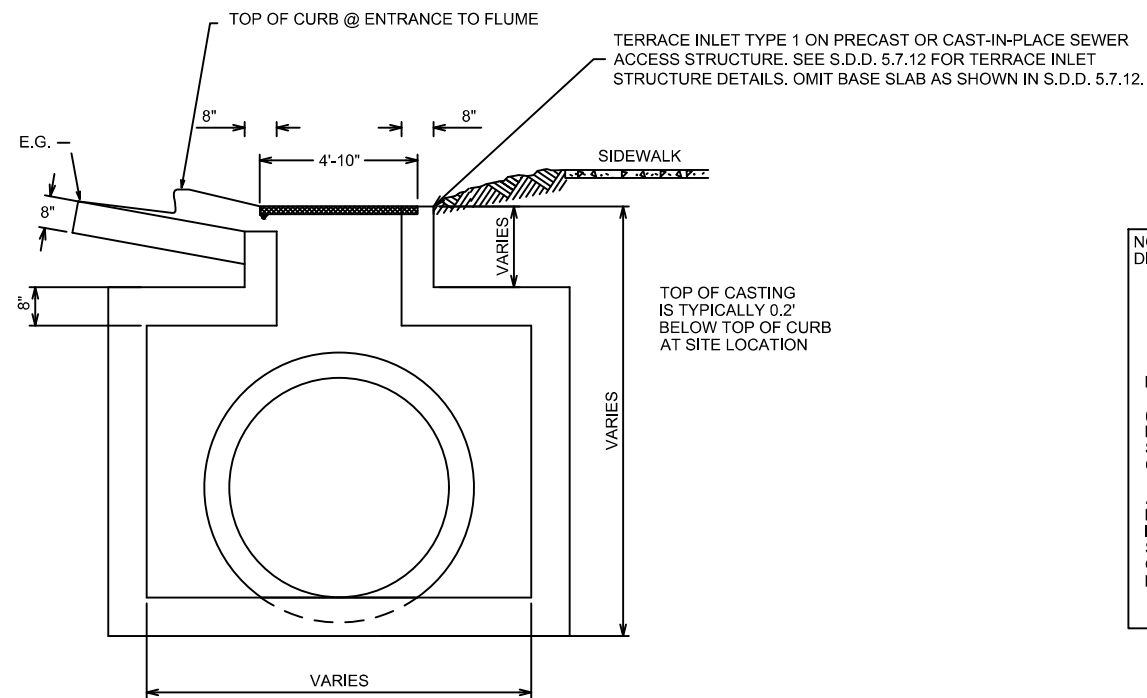
DETAILS
STRICKER POND FOREBAY DREDGING
M:\DESIGN\Projects\15697\CAD\Storm\15697Storm.dwg



15697
D-2



SECTION 1



SECTION 2

GENERAL NOTE
 TERRACE INLET TYPE 1 ON CATCH BASIN LID CONSISTS OF A TERRACE INLET TYPE 1 CONSTRUCTED OVER A PRECAST OR CAST-IN-PLACE SEWER ACCESS STRUCTURE.
 REFER TO S.D.D. 5.7.12 FOR ALL DETAILS RELATED TO THE TYPE 1 INLET.
 REFER TO PLAN FOR SEWER ACCESS STRUCTURE TYPE, SIZE AND DETAILS.
 PROVIDE ADDITIONAL REINFORCEMENT AT CONCRETE OPENING IN SEWER ACCESS STRUCTURE PER "ADDITIONAL REINFORCEMENT AT CONCRETE OPENINGS" DETAIL ON S.D.D. 5.7.3

NOTE:
 DIMENSION FROM FACE OF CURB TO CENTER OF STRUCTURE

CURB TYPE	DISTANCE
TYPE A, D, G, X	4'-4"
TYPE B, E, H	4'-10"

PLAN VIEW NOTES:
 (A) THE CONTRACTOR SHALL BE REQUIRED TO HAND POUR AND FORM THE LIMITS OF THE CURB ASSOCIATED WITH THE STRUCTURE UNLESS SPECIFICALLY APPROVED BY THE CONSTRUCTION ENGINEER.
 A STRAIGHT LINE GRADE SHALL BE MAINTAINED FROM THE PAVEMENT EDGE OF GUTTER TO THE OUTSIDE EDGE OF THE INLET, AS SHOWN GRAPHICALLY IN SECTION #2. THE STRAIGHT LINE GRADE SHALL EXTEND 5.5' ON BOTH SIDES OF THE INLET. SEE THE DASHED LINES ON PLAN VIEW FOR REFERENCE.

MARK	REVISION	DATE	BY

15697
 MADISON, WI
 CONTRACT NO: 9657
 15697
 Date: 8/10/2025 2:36 PM
 Scale: Custom
 D-3

TERRACE INLET TYPE 1 ON CATCH BASIN LID DETAIL
 STRICKER'S POND FOREBAY DREDGING
 M:\DESIGN\Projects\15697\CAD\Sewers\15697SWR-PipeNetwork.dwg

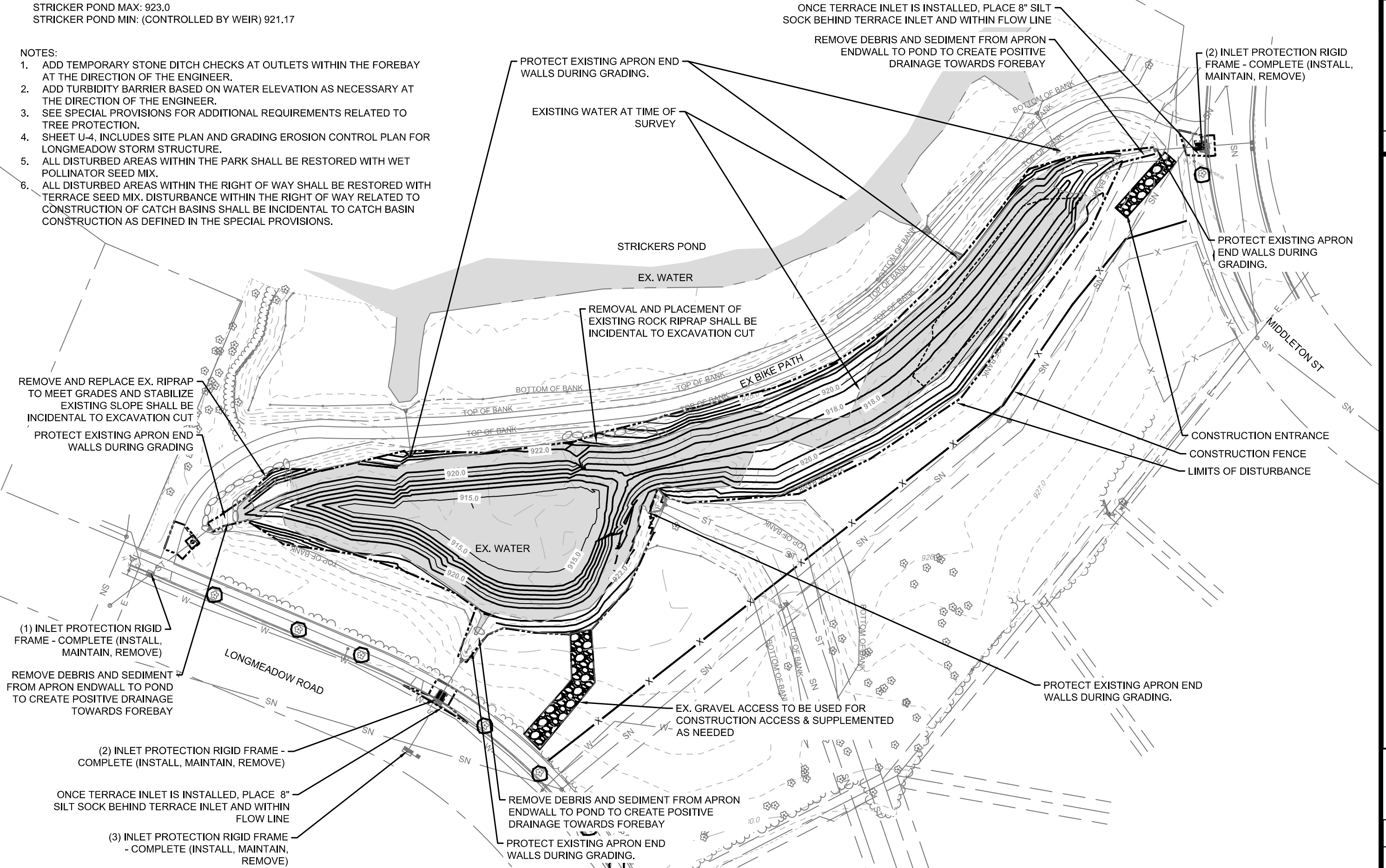


15697
 D-3

STRICKER POND MAX: 923.0
 STRICKER POND MIN: (CONTROLLED BY WEIR) 921.17

NOTES:

1. ADD TEMPORARY STONE DITCH CHECKS AT OUTLETS WITHIN THE FOREBAY AT THE DIRECTION OF THE ENGINEER.
2. ADD TURBIDITY BARRIER BASED ON WATER ELEVATION AS NECESSARY AT THE DIRECTION OF THE ENGINEER.
3. SEE SPECIAL PROVISIONS FOR ADDITIONAL REQUIREMENTS RELATED TO TREE PROTECTION.
4. SHEET U-4, INCLUDES SITE PLAN AND GRADING EROSION CONTROL PLAN FOR LONGMEADOW STORM STRUCTURE.
5. ALL DISTURBED AREAS WITHIN THE PARK SHALL BE RESTORED WITH WET POLLINATOR SEED MIX.
6. ALL DISTURBED AREAS WITHIN THE RIGHT OF WAY SHALL BE RESTORED WITH TERRACE SEED MIX. DISTURBANCE WITHIN THE RIGHT OF WAY RELATED TO CONSTRUCTION OF CATCH BASINS SHALL BE INCIDENTAL TO CATCH BASIN CONSTRUCTION AS DEFINED IN THE SPECIAL PROVISIONS.



MARK	REVISION	DATE	BY
15697	15697	8/10/2025 2:37 PM	S1

15697
 MADISON, WI
 CONTRACT NO: 9657

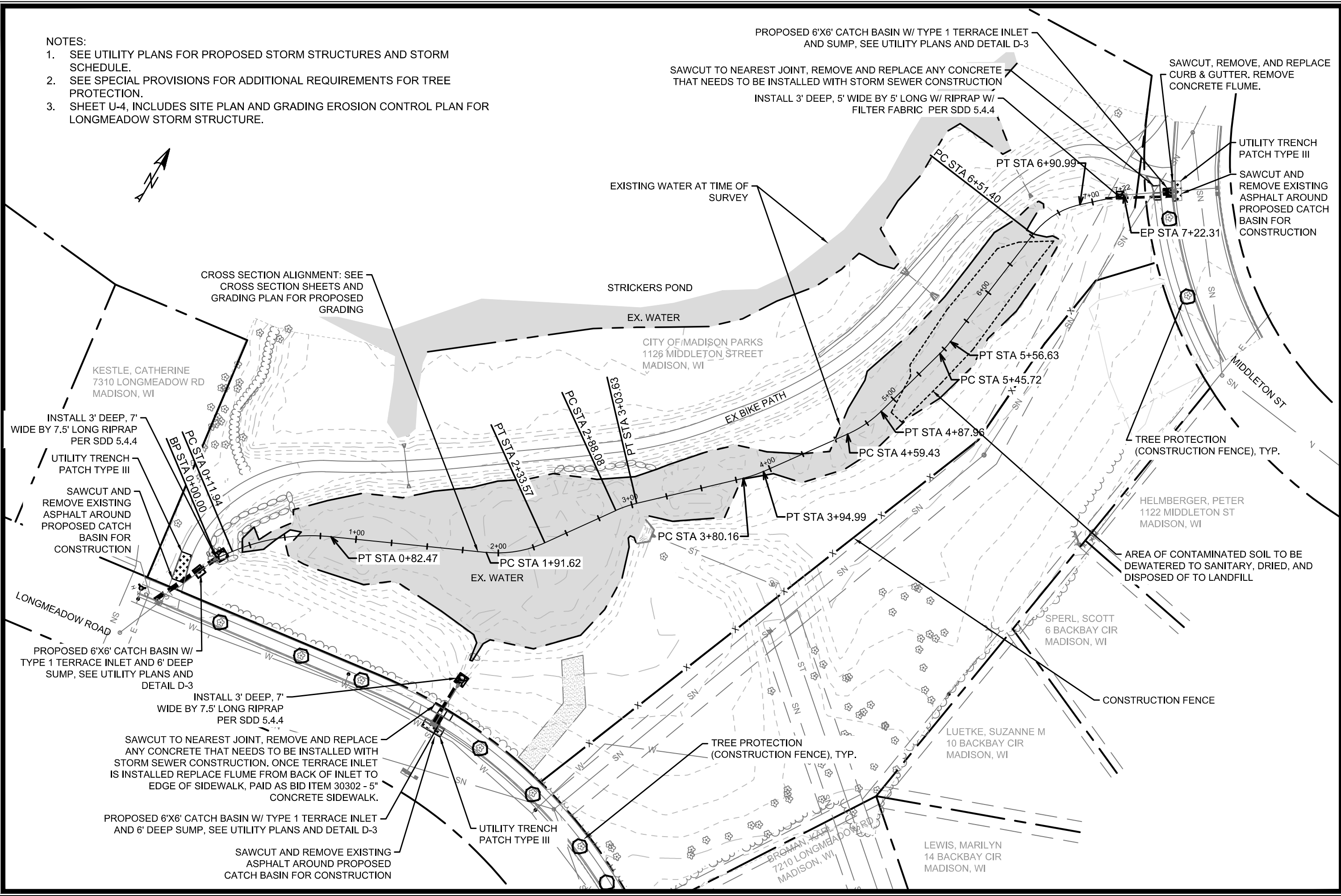
GRADING AND EROSION CONTROL PLAN
 STRICKER POND FOREBAY DREDGING
 M:\DESIGN\Projects\15697\CAD\Storm\15697Storm.dwg



15697
 GR-1

NOTES:

1. SEE UTILITY PLANS FOR PROPOSED STORM STRUCTURES AND STORM SCHEDULE.
2. SEE SPECIAL PROVISIONS FOR ADDITIONAL REQUIREMENTS FOR TREE PROTECTION.
3. SHEET U-4, INCLUDES SITE PLAN AND GRADING EROSION CONTROL PLAN FOR LONGMEADOW STORM STRUCTURE.



PROPOSED 6'X6' CATCH BASIN W/ TYPE 1 TERRACE INLET AND SUMP, SEE UTILITY PLANS AND DETAIL D-3

SAWCUT TO NEAREST JOINT, REMOVE AND REPLACE ANY CONCRETE THAT NEEDS TO BE INSTALLED WITH STORM SEWER CONSTRUCTION

INSTALL 3' DEEP, 5' WIDE BY 5' LONG W/ RIPRAP W/ FILTER FABRIC PER SDD 5.4.4

SAWCUT, REMOVE, AND REPLACE CURB & GUTTER. REMOVE CONCRETE FLUME.

UTILITY TRENCH PATCH TYPE III

SAWCUT AND REMOVE EXISTING ASPHALT AROUND PROPOSED CATCH BASIN FOR CONSTRUCTION

CROSS SECTION ALIGNMENT: SEE CROSS SECTION SHEETS AND GRADING PLAN FOR PROPOSED GRADING

EXISTING WATER AT TIME OF SURVEY

STRICKERS POND

EX. WATER

CITY OF MADISON PARKS
1126 MIDDLETON STREET
MADISON, WI

EX BIKE PATH

KESTLE, CATHERINE
7310 LONGMEADOW RD
MADISON, WI

INSTALL 3' DEEP, 7' WIDE BY 7.5' LONG RIPRAP PER SDD 5.4.4

UTILITY TRENCH PATCH TYPE III

SAWCUT AND REMOVE EXISTING ASPHALT AROUND PROPOSED CATCH BASIN FOR CONSTRUCTION

TREE PROTECTION (CONSTRUCTION FENCE), TYP.

HELMBERGER, PETER
1122 MIDDLETON ST
MADISON, WI

AREA OF CONTAMINATED SOIL TO BE DEWATERED TO SANITARY, DRIED, AND DISPOSED OF TO LANDFILL

SPERL, SCOTT
6 BACKBAY CIR
MADISON, WI

CONSTRUCTION FENCE

LUETKE, SUZANNE M
10 BACKBAY CIR
MADISON, WI

TREE PROTECTION (CONSTRUCTION FENCE), TYP.

SAWCUT TO NEAREST JOINT, REMOVE AND REPLACE ANY CONCRETE THAT NEEDS TO BE INSTALLED WITH STORM SEWER CONSTRUCTION. ONCE TERRACE INLET IS INSTALLED REPLACE FLUME FROM BACK OF INLET TO EDGE OF SIDEWALK, PAID AS BID ITEM 30302 - 5" CONCRETE SIDEWALK.

PROPOSED 6'X6' CATCH BASIN W/ TYPE 1 TERRACE INLET AND 6' DEEP SUMP, SEE UTILITY PLANS AND DETAIL D-3

UTILITY TRENCH PATCH TYPE III

SAWCUT AND REMOVE EXISTING ASPHALT AROUND PROPOSED CATCH BASIN FOR CONSTRUCTION

BROMAN, KATE
7210 LONGMEADOW RD
MADISON, WI

LEWIS, MARILYN
14 BACKBAY CIR
MADISON, WI

REVISION	DATE	BY

15697
MADISON, WI
9657
CONTRACT NO:

SITE PLAN
STRICKER POND FOREBAY DREDGING
M:\DESIGN\Projects\15697\CAD\Storm\15697Storm.dwg



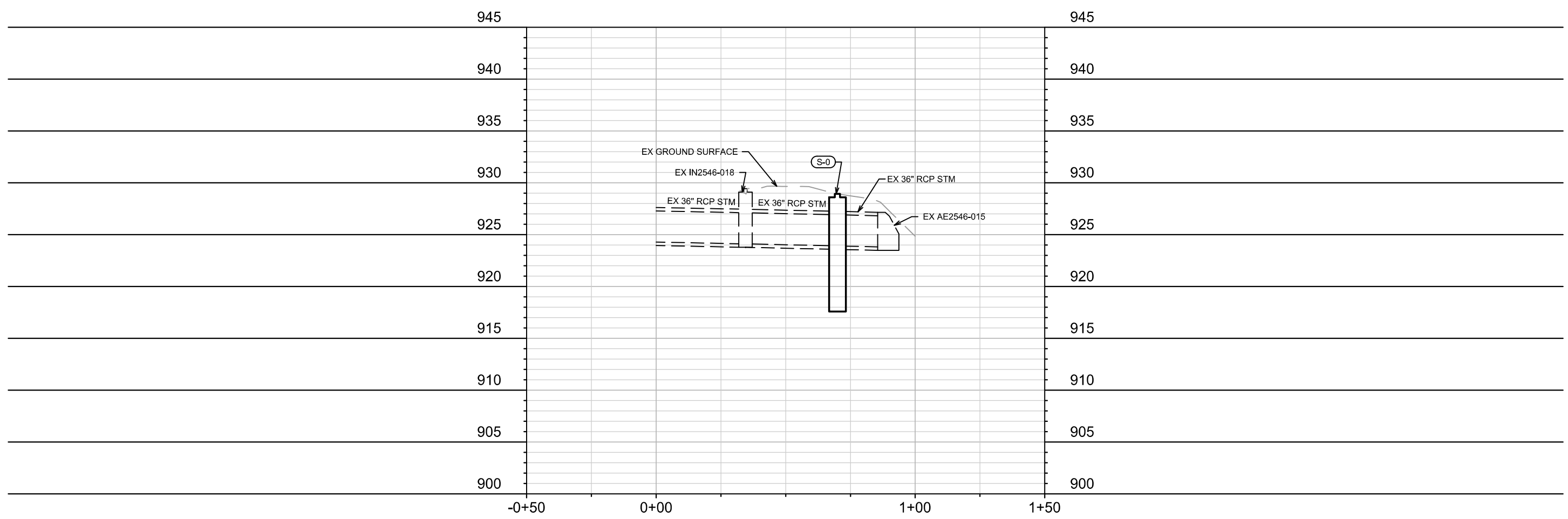
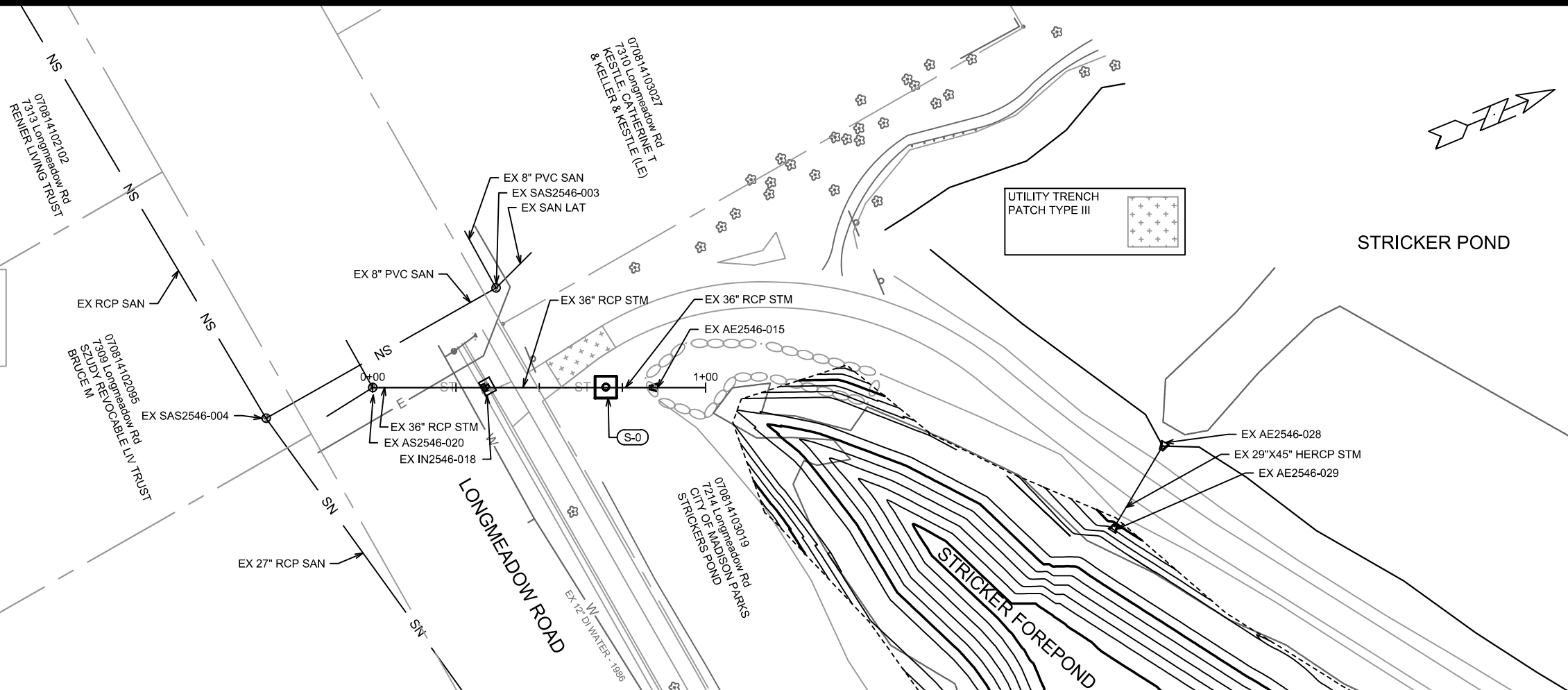
15697
S-1

Excavation Near Street Trees
 As defined by the **Section 107.13 of City of Madison Standard Specifications for Public Works Construction**: No excavation is permitted within 5 feet of the trunk of the street tree or when cutting roots over 3 inches in diameter. If excavation is necessary, the Contractor shall contact Madison City Forestry at (608) 266-4816 prior to excavation. City of Madison Forestry personnel shall assess the impact to the tree and to its root system prior to work commencing. Tree protection specifications can be found on the following website: <https://www.cityofmadison.com/business/pw/specs.cfm>

Damaging Street Trees
 Contractor shall take precautions during construction to not disfigure, scar, or impair the health of any street tree. Contractor shall operate equipment in a manner as to not damage the branches of the street tree(s). This may require using smaller equipment and loading and unloading materials in a designated space away from trees on the construction site. Any damage or injury to existing street trees (either above or below ground) shall be reported immediately to City Forestry at (608) 266-4816. Penalties and remediation shall be required.

Soil Compaction
Section 107.13(g) of City of Madison Standard Specifications for Public Works Construction (website: <https://www.cityofmadison.com/business/pw/specs.cfm>) addresses soil compaction near street trees and shall be followed by Contractor. The storage of parked vehicles, construction equipment, building materials, refuse, excavated spoils or dumping of poisonous materials on or around trees and roots within five (5) feet of the tree or within the protection zone is prohibited.

Protection Fencing
 On this project, street tree protection zone fencing is required. The fencing shall be erected before the demolition, grading or construction begins. The fence shall include the entire width of terrace and, extend at least 5 feet on both sides of the outside edge of the tree trunk. Do not remove the fencing to allow for deliveries or equipment access through the tree protection zone.



MARK	REVISION	DATE	BY

15697
 MADISON, WI
 9657
 CONTRACT NO:

UTILITY PLAN & PROFILE - SOUTHWEST FOREBAY STORM
 STRICKER'S POND FOREBAY DREDGING
 M:\DESIGN\Projects\15697\CAD\Sewers\15697SWR-PipeNetwork.dwg



15697
 U-1

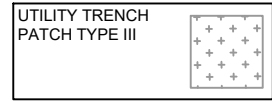
Excavation Near Street Trees
 As defined by the **Section 107.13 of City of Madison Standard Specifications for Public Works Construction**: No excavation is permitted within 5 feet of the trunk of the street tree or when cutting roots over 3 inches in diameter. If excavation is necessary, the Contractor shall contact Madison City Forestry at (608) 266-4816 prior to excavation. City of Madison Forestry personnel shall assess the impact to the tree and to its root system prior to work commencing. Tree protection specifications can be found on the following website:
<https://www.cityofmadison.com/business/pw/specs.cfm>

Damaging Street Trees
 Contractor shall take precautions during construction to not disfigure, scar, or impair the health of any street tree. Contractor shall operate equipment in a manner as to not damage the branches of the street tree(s). This may require using smaller equipment and loading and unloading materials in a designated space away from trees on the construction site. Any damage or injury to existing street trees (either above or below ground) shall be reported immediately to City Forestry at (608) 266-4816. Penalties and remediation shall be required.

Soil Compaction
Section 107.13(g) of City of Madison Standard Specifications for Public Works Construction (website: <https://www.cityofmadison.com/business/pw/specs.cfm>) addresses soil compaction near street trees and shall be followed by Contractor. The storage of parked vehicles, construction equipment, building materials, refuse, excavated spoils or dumping of poisonous materials on or around trees and roots within five (5) feet of the tree or within the protection zone is prohibited.

Protection Fencing
 On this project, street tree protection zone fencing is required. The fencing shall be erected before the demolition, grading or construction begins. The fence shall include the entire width of terrace and, extend at least 5 feet on both sides of the outside edge of the tree trunk. Do not remove the fencing to allow for deliveries or equipment access through the tree protection zone.

070814102079
 7301 Longmeadow Rd
 BENTLEY, RICHARD R
 & KATHERINE R BENTLEY



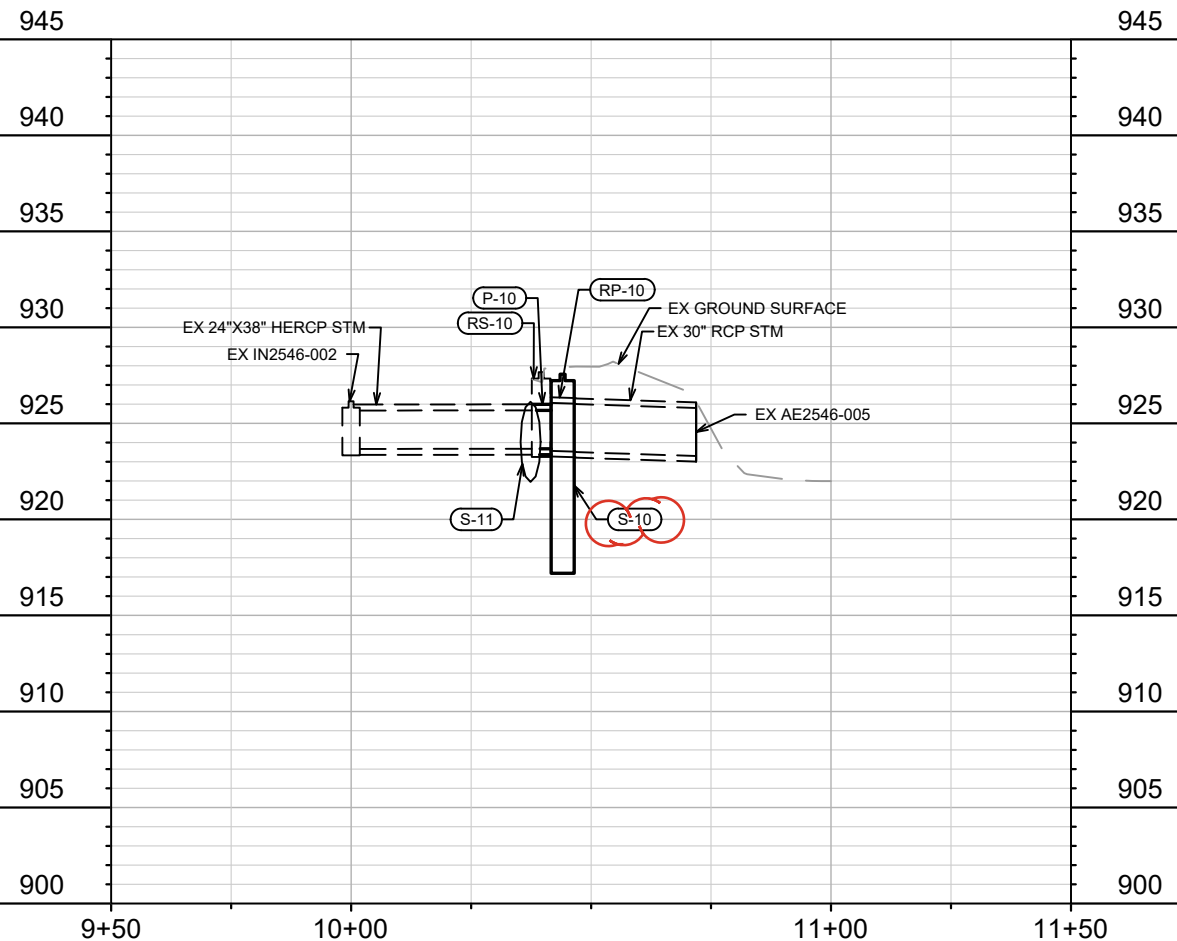
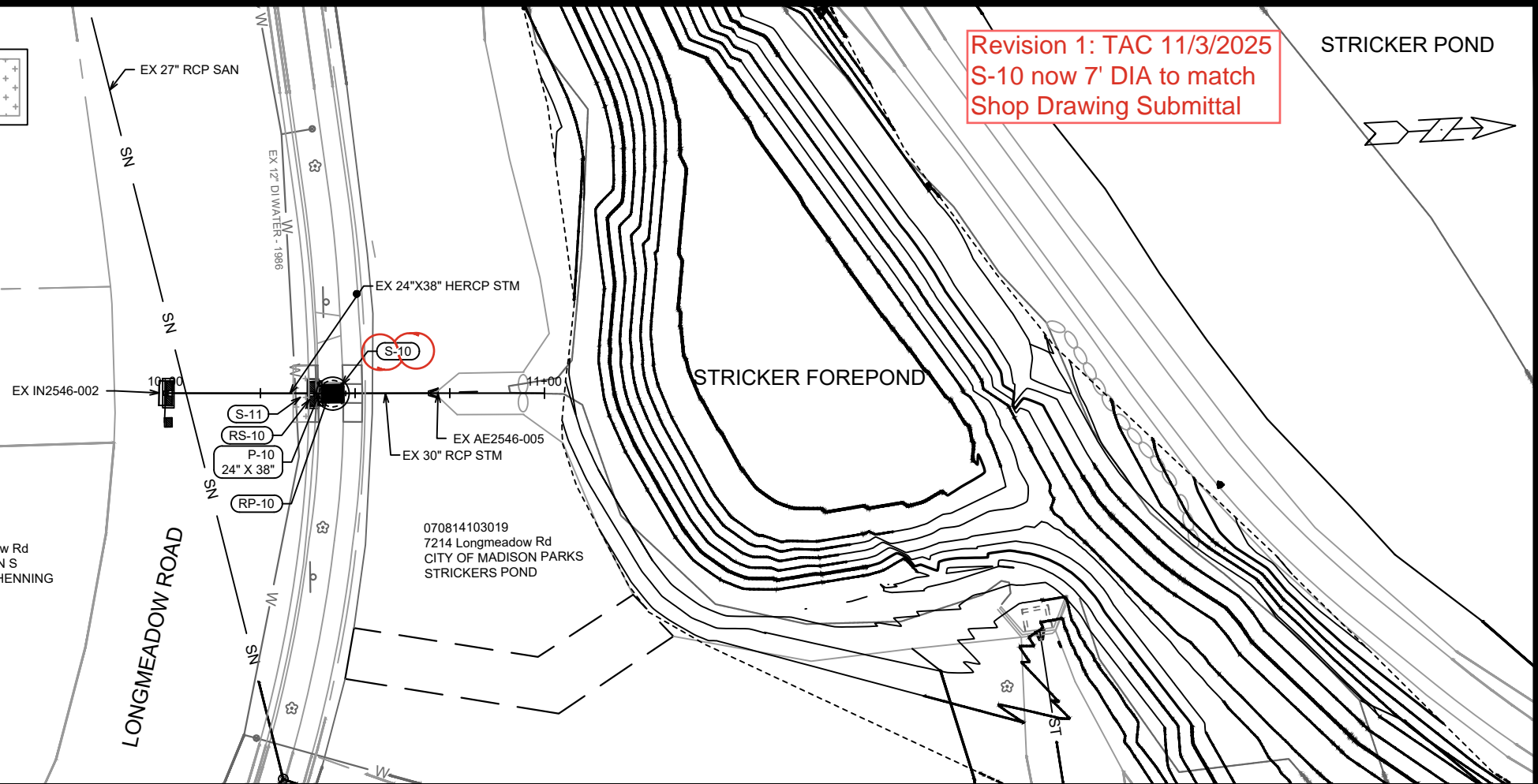
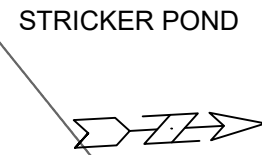
070814102061
 7221 Longmeadow Rd
 CITY OF MADISON ENGINEER
 WALKWAYS & BIKEPATHS 536

070814102045
 7213 Longmeadow Rd
 DRAKE, STEPHEN & ALICE

070814102053
 7217 Longmeadow Rd
 HENNING, KARIN S
 & JONATHAN J HENNING

070814103019
 7214 Longmeadow Rd
 CITY OF MADISON PARKS
 STRICKERS POND

Revision 1: TAC 11/3/2025
S-10 now 7' DIA to match
Shop Drawing Submittal



MARK	REVISION	DATE	BY
	REVISION 1	11/3/2025	TAC
Designed By:	TAC	Date:	11/3/2025 9:06 AM
Scale:	1:40		
15697			U-2

15697
 MADISON, WI
 9657
 CONTRACT NO:

UTILITY PLAN & PROFILE - SOUTH FOREBAY STORM
 STRICKER'S POND FOREBAY DREDGING
 M:\DESIGN\Projects\15697\CAD\sewers\15697SWR-PipeNetwork.dwg



15697
 U-2

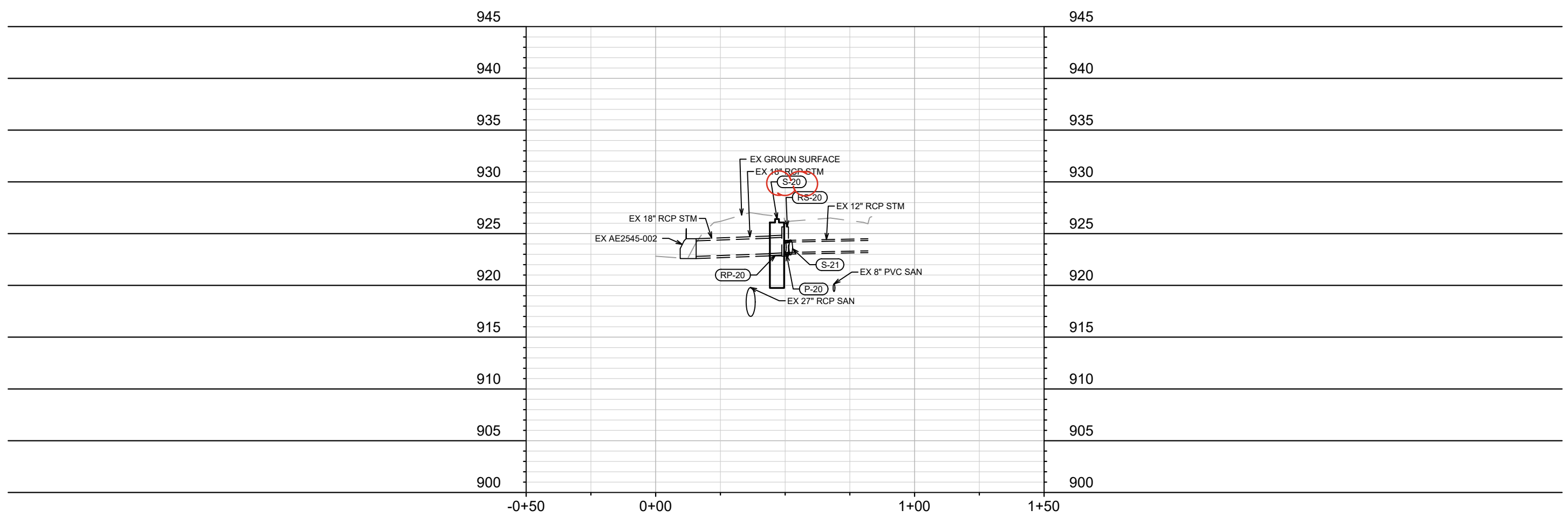
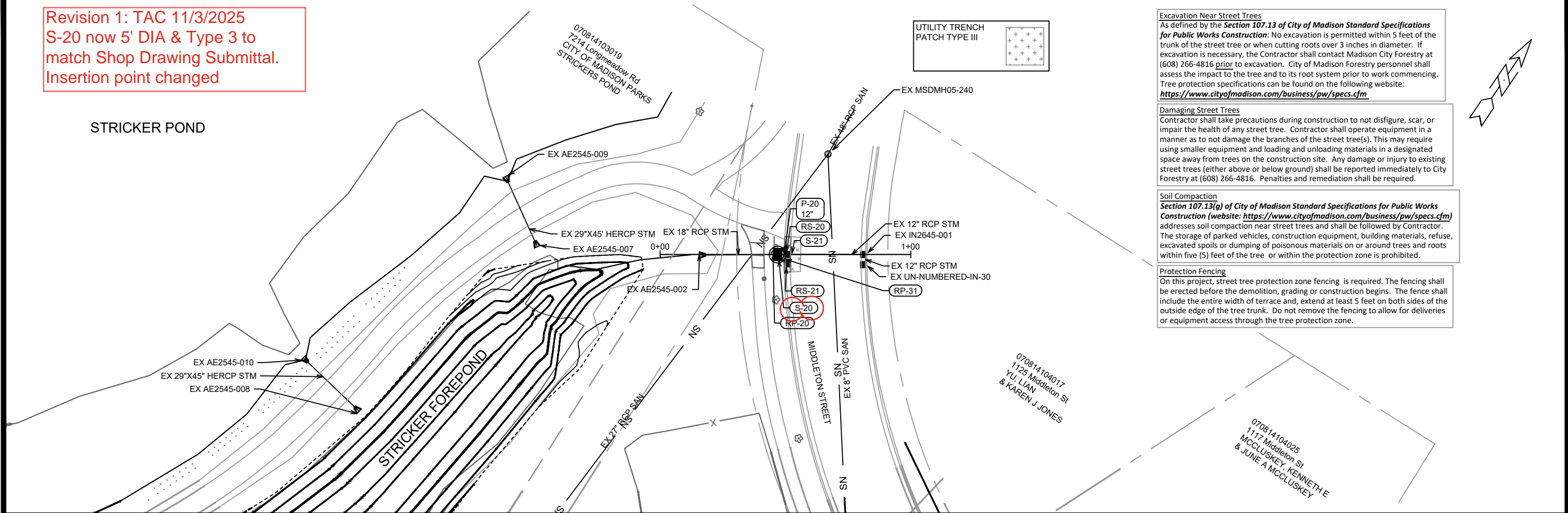
Revision 1: TAC 11/3/2025
 S-20 now 5' DIA & Type 3 to
 match Shop Drawing Submittal.
 Insertion point changed

Excavation Near Street Trees
 As defined by the **Section 107.13 of City of Madison Standard Specifications for Public Works Construction**: No excavation is permitted within 5 feet of the trunk of the street tree or when cutting roots over 3 inches in diameter. If excavation is necessary, the Contractor shall contact Madison City Forestry at (608) 266-4816 prior to excavation. City of Madison Forestry personnel shall assess the impact to the tree and to its root system prior to work commencing. Tree protection specifications can be found on the following website: <https://www.cityofmadison.com/business/pw/specs.cfm>

Damaging Street Trees
 Contractor shall take precautions during construction to not disfigure, scar, or impair the health of any street tree. Contractor shall operate equipment in a manner as to not damage the branches of the street tree(s). This may require using smaller equipment and loading and unloading materials in a designated space away from trees on the construction site. Any damage or injury to existing street trees (either above or below ground) shall be reported immediately to City Forestry at (608) 266-4816. Penalties and remediation shall be required.

Soil Compaction
Section 107.13(g) of City of Madison Standard Specifications for Public Works Construction (website: <https://www.cityofmadison.com/business/pw/specs.cfm>) addresses soil compaction near street trees and shall be followed by Contractor. The storage of parked vehicles, construction equipment, building materials, refuse, excavated spoils or dumping of poisonous materials on or around trees and roots within five (5) feet of the tree or within the protection zone is prohibited.

Protection Fencing
 On this project, street tree protection zone fencing is required. The fencing shall be erected before the demolition, grading or construction begins. The fence shall include the entire width of terrace and, extend at least 5 feet on both sides of the outside edge of the tree trunk. Do not remove the fencing to allow for deliveries or equipment access through the tree protection zone.



DATE	BY
11/03/2025	U-3
REVISION	
DATE	BY
11/03/2025 9:06 AM	U-3
DESIGNED BY	
TAC	
15697	

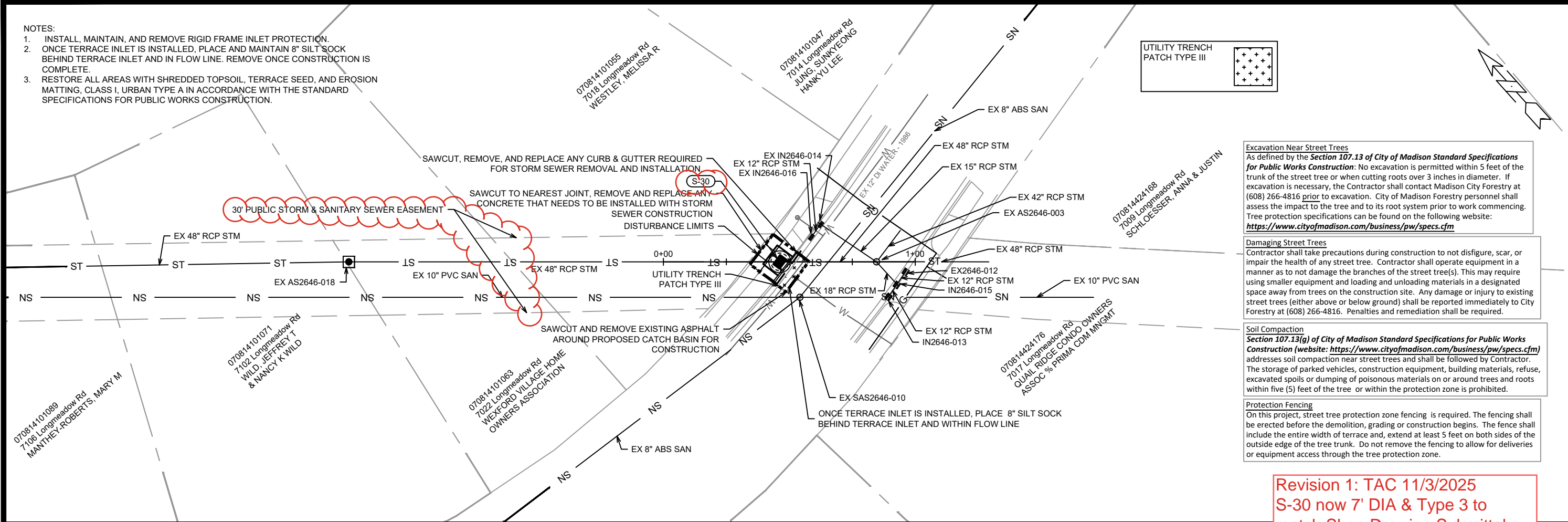
15697
 MADISON, WI
 9657
 CONTRACT NO:

UTILITY PLAN & PROFILE - NORTH FOREBAY STORM
 STRICKER'S POND FOREBAY DREDGING
 M:\DESIGN\Projects\15697\CAD\sewers\15697SWR-PipeNetwork.dwg



15697
 U-3

- NOTES:
1. INSTALL, MAINTAIN, AND REMOVE RIGID FRAME INLET PROTECTION.
 2. ONCE TERRACE INLET IS INSTALLED, PLACE AND MAINTAIN 8" SILT SOCK BEHIND TERRACE INLET AND IN FLOW LINE. REMOVE ONCE CONSTRUCTION IS COMPLETE.
 3. RESTORE ALL AREAS WITH SHREDDED TOPSOIL, TERRACE SEED, AND EROSION MATTING, CLASS I, URBAN TYPE A IN ACCORDANCE WITH THE STANDARD SPECIFICATIONS FOR PUBLIC WORKS CONSTRUCTION.



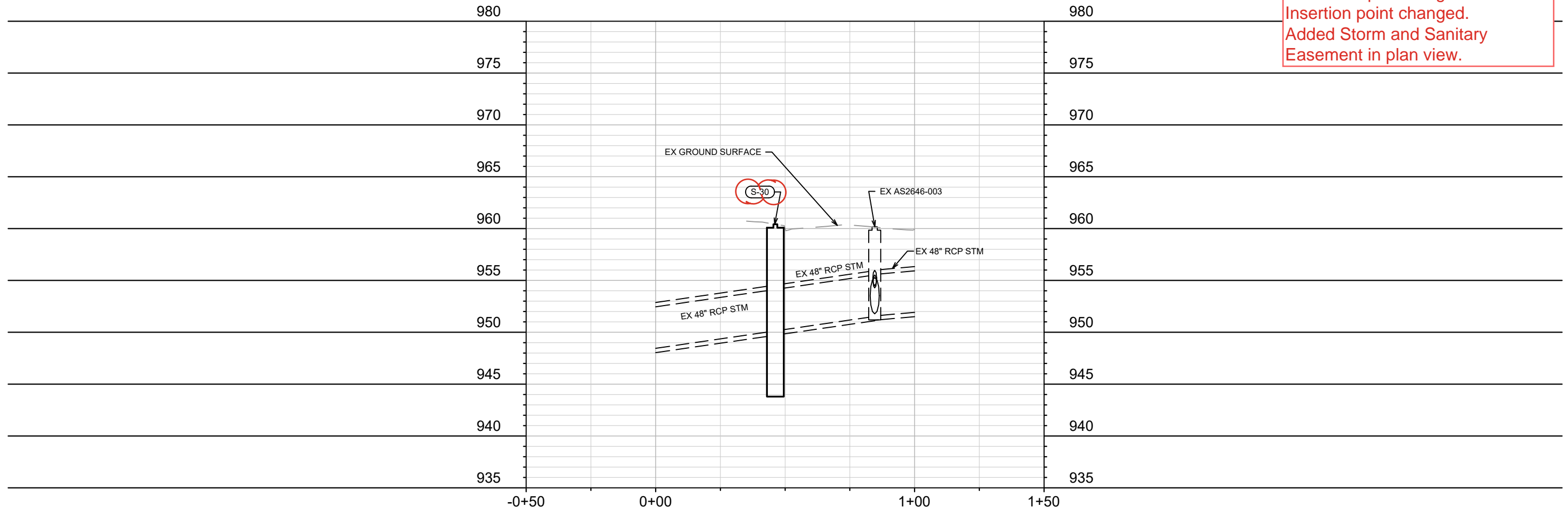
Excavation Near Street Trees
 As defined by the **Section 107.13 of City of Madison Standard Specifications for Public Works Construction**: No excavation is permitted within 5 feet of the trunk of the street tree or when cutting roots over 3 inches in diameter. If excavation is necessary, the Contractor shall contact Madison City Forestry at (608) 266-4816 prior to excavation. City of Madison Forestry personnel shall assess the impact to the tree and to its root system prior to work commencing. Tree protection specifications can be found on the following website: <https://www.cityofmadison.com/business/pw/specs.cfm>

Damaging Street Trees
 Contractor shall take precautions during construction to not disfigure, scar, or impair the health of any street tree. Contractor shall operate equipment in a manner as to not damage the branches of the street tree(s). This may require using smaller equipment and loading and unloading materials in a designated space away from trees on the construction site. Any damage or injury to existing street trees (either above or below ground) shall be reported immediately to City Forestry at (608) 266-4816. Penalties and remediation shall be required.

Soil Compaction
Section 107.13(g) of City of Madison Standard Specifications for Public Works Construction (website: <https://www.cityofmadison.com/business/pw/specs.cfm>) addresses soil compaction near street trees and shall be followed by Contractor. The storage of parked vehicles, construction equipment, building materials, refuse, excavated spoils or dumping of poisonous materials on or around trees and roots within five (5) feet of the tree or within the protection zone is prohibited.

Protection Fencing
 On this project, street tree protection zone fencing is required. The fencing shall be erected before the demolition, grading or construction begins. The fence shall include the entire width of terrace and, extend at least 5 feet on both sides of the outside edge of the tree trunk. Do not remove the fencing to allow for deliveries or equipment access through the tree protection zone.

Revision 1: TAC 11/3/2025
S-30 now 7' DIA & Type 3 to match Shop Drawing Submittal.
Insertion point changed.
Added Storm and Sanitary Easement in plan view.



DATE	11/3/2025	TAC	BY	U-4
REVISION	1			
DESIGNED BY	TAC	DATE	11/3/2025	9:06 AM
SCALE	1:40			
PROJECT NO.	15697			

15697
 MADISON, WI
 9657
 CONTRACT NO.

UTILITY PLAN & PROFILE - LONGMEADOW STORM
 STRICKER'S POND FOREBAY DREDGING
 M:\DESIGN\Projects\15697\CAD\sewers\15697SWR-PipeNetwork.dwg



15697
 U-4

STORM SEWER SCHEDULE

* REVISION 1: TAC 11/3/2025

STRICKER'S POND FOREBAY DREDGING	SHEET NO.	U-5
PROJECT NO. 15697	U-5	
STORM SEWER SCHEDULE		
CITY OF MADISON		

PROPOSED STORM STRUCTURES

STRUC. NO.	STATION	LOCATION (OFFSET)	TYPE	TOP OF CASTING	E.I.	DEPTH	NOTES
LONGMEADOW ROAD							
* S-0	0+69.99	LT-0.10	6'X6' CATCHBASIN	928.93	923.91	11.02	W/2XR-1550-0054, 6' SUMP
* S-10	10+44.07	RT-0.11	7'X7' CATCHBASIN	927.56	923.53	10.03	[1] W/ 6' SUMP
S-11	10+37.39	RT-0.12	CONCRETE COLLAR	-	923.68	-	-
* S-30	0+45.22	CL	7'X7' CATCHBASIN	960.07	950.11	15.96	[5] W/ 6' SUMP
MIDDLETON STREET							
* S-20	0+46.87	RT-0.01	5'X5' CATCHBASIN	926.41	923.08	6.33	[2] W/ 3' SUMP
S-21	0+52.18	CL	CONCRETE COLLAR	-	923.17	-	-

STORM STRUCTURE REMOVALS & ABANDONMENTS

STRUC. NO.	STATION	LOCATION (OFFSET)	TYPE	DEPTH (FT)	NOTES	ID NO.
LONGMEADOW ROAD						
RS-10	10+39.60	RT-0.13	HH INLET	4.08	-	IN2546-003
MIDDLETON STREET						
RS-20	RT-50.00	CL	H INLET	2.83	-	IN2645-002 [4]
RS-21	0+50.08	RT-3.74	H INLET	2.76	-	UN-NUMBERED INLET

PROPOSED STORM PIPES

PIPE NO.	FROM (DNSTM)	TO (UPSTM)	DISCH. E.I.	INLET E.I.	PLAN (PAY) LGTH (FT)	PIPE LGTH (FT)	SLOPE (%)	PIPE SIZE	TYPE	NOTES
LONGMEADOW ROAD										
P-10	S-10	S-11	923.68	923.68	7	4.6	0.00%	24"X38"	HERCP	[3]
MIDDLETON STREET										
P-20	S-20	S-21	923.08	923.17	6	3.7	2.41%	12"	TYPE I	-

STORM PIPE REMOVALS & ABANDONMENTS

PIPE REMOVAL NO.	REMOVE FROM	REMOVE TO	LGTH (FT)	PAID LGTH (FT)	PIPE SIZE	PIPE TYPE	NOTES
LONGMEADOW ROAD							
RP-10	S-10	RS-10	8	0	30"	RCP	
MIDDLETON STREET							
RP-20	S-20	RS-20	7	0	18"	RCP	
RP-21	RS-20	RS-21	4	0	12"	RCP	

SPECIFIC NOTES:

- * [1] CONSTRUCT ROOF OF 7'X7' CATCHBASIN W/ TERRACE INLET TYPE I. TERRACE INLET TYPE I (INCIDENTAL TO BID ITEM 90011 6'x6' CATCHBASIN W/ TYPE 1 TERRACE INLET & 6' SUMP)
- * [2] CONSTRUCT ROOF OF 5'X5' CATCHBASIN W/ TERRACE INLET TYPE 3. TERRACE INLET TYPE I (INCIDENTAL TO BID ITEM 90015 6'x6' CATCHBASIN W/ TYPE 1 TERRACE INLET & 3' SUMP)
- [3] MATCH EXISTING PIPE SLOPE. SURVEY INDICATED THE PIPE SLOPE WAS 0%
- [4] HH INLET PAID AS BID ITEM #20311-REMOVE SEWER ACCESS STRUCTURE
- * [5] CONSTRUCT ROOF OF 7'X7' CATCHBASIN W/ TERRACE INLET TYPE 3. TERRACE INLET TYPE I (INCIDENTAL TO BID ITEM 90011 6'x6' CATCHBASIN W/ TYPE 1 TERRACE INLET & 6' SUMP)

STANDARD NOTES:

- ABBREVIATIONS: AE = APRON ENDWALL; RCP = REINFORCED CONCRETE PIPE; HERCP = HORIZONTAL ELLIPTICAL REINFORCED CONCRETE PIPE; DNA = DOES NOT APPLY; SAS = SEWER ACCESS STRUCTURE; LP = LOW POINT INLET STRUCTURE; FP = FIELD POURED STRUCTURE; TR = TOP OF CONCRETE ROOF; NCM = NO CROWN MATCH FOR PIPES; UD = UNDERDRAIN

- PLAN LENGTH (PAY LENGTH) IS FROM CENTER OF STRUCTURE TO CENTER OF STRUCTURE. PIPE LENGTH IS ACTUAL LENGTH OF PIPE FROM STRUCTURE WALL TO STRUCTURE WALL. SLOPE CALCULATED USING PIPE LENGTH.

- TOP OF CASTING GRADE GIVEN IS THE TOP OF CURB FOR INLET STRUCTURES AND THE FLOWLINE OF THE CLOSED CASTING FOR SAS.

- APPROXIMATE DISCHARGE E.I. GIVEN, ADJUST E.I. AND PIPE SLOPE IN THE FIELD.

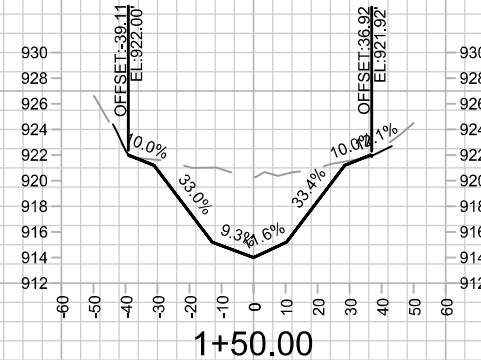
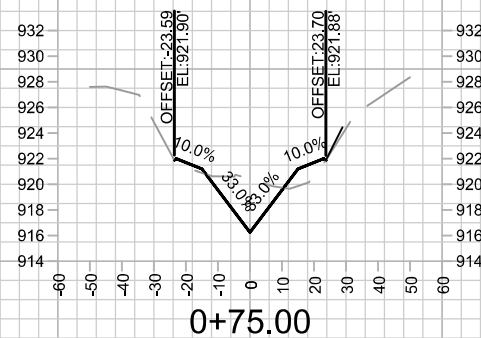
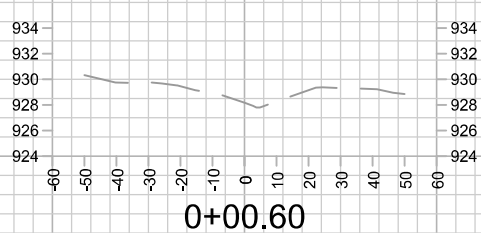
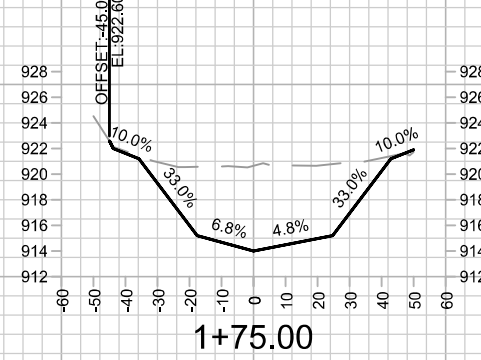
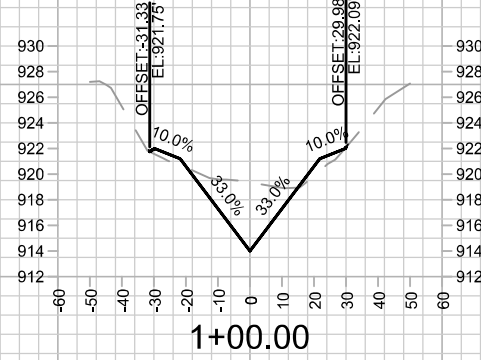
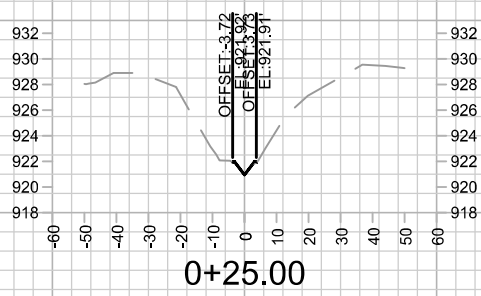
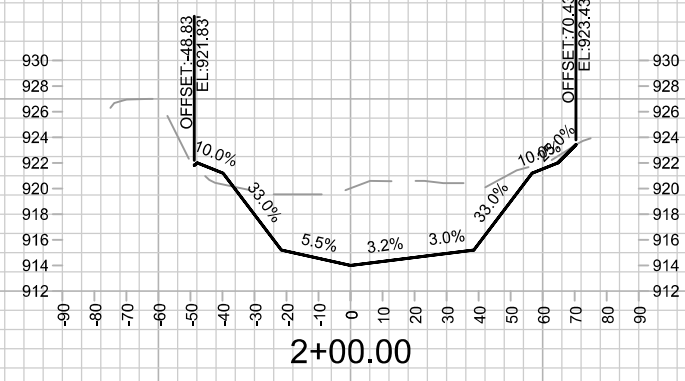
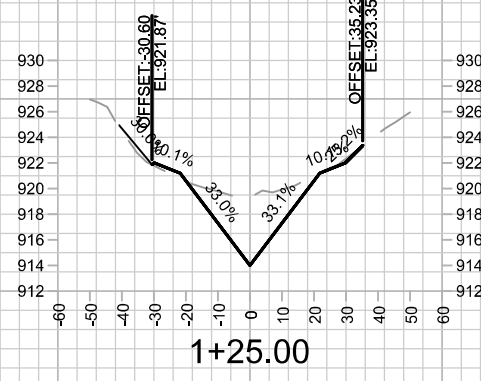
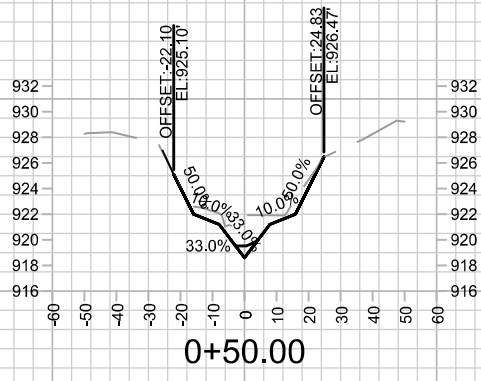
- ALL REINFORCED CONCRETE PIPES TO BE CLASS 3 UNLESS OTHERWISE NOTED.

- ALL FIELD POURED SAS STORM STRUCTURES SHALL BE CONSTRUCTED IN ACCORDANCE WITH STANDARD DETAIL DRAWING 5.7.3. ALL PRECAST SAS STORM STRUCTURES SHALL BE CONSTRUCTED IN ACCORDANCE WITH STANDARD DETAIL DRAWING 5.7.5.

- ALL STRUCTURES CALLED OUT AS FIELD POURED SHALL BE FIELD POURED. ALL OTHER STRUCTURES (NOT INDICATED AS FIELD POURED) SHALL BE SUBMITTED TO CITY ENGINEERING FOR APPROVAL TCHOJNOWSKI@CITYOFMADISON.COM ((608) 266-4094).

- ALL REBAR FOR FIELD POURED STRUCTURES SHALL BE EPOXY COATED. ANY EXPOSED STEEL SHALL BE TOUCHED UP OR RECOATED PRIOR TO USE.

- SURVEYOR TO CONFIRM THAT ALL INLET STATION / OFFSETS LINE UP WITH PROPOSED CURB AND GUTTER.



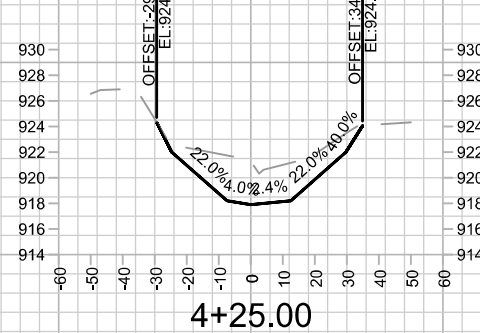
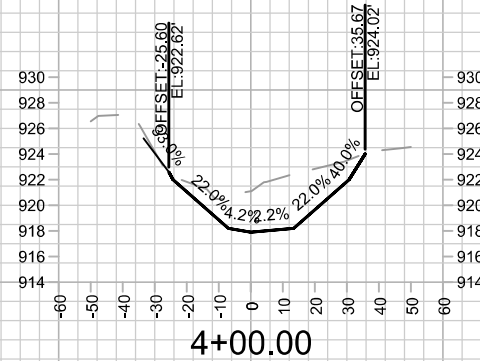
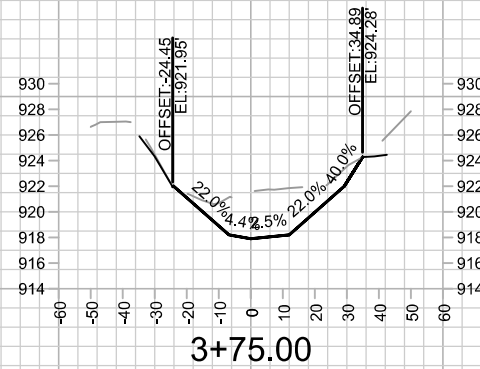
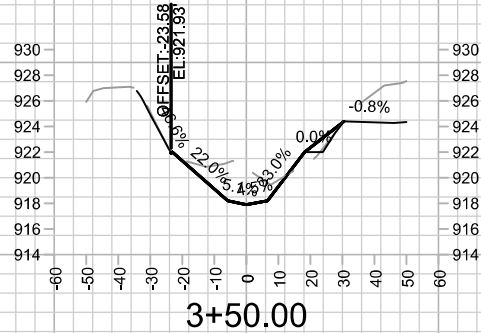
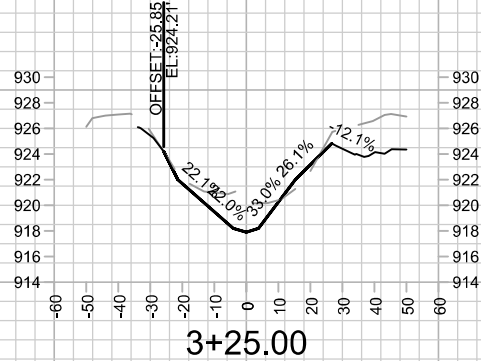
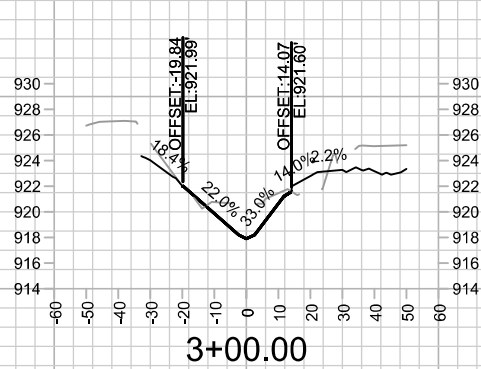
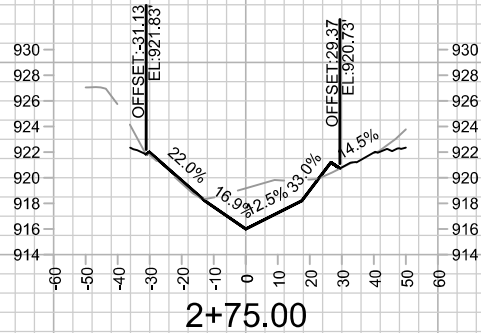
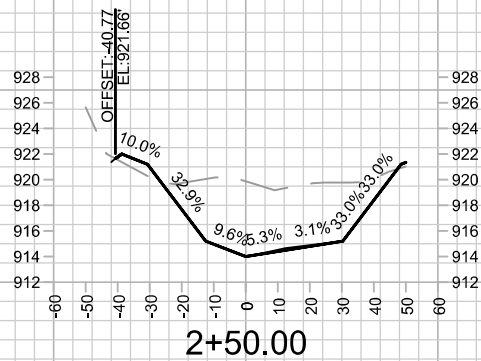
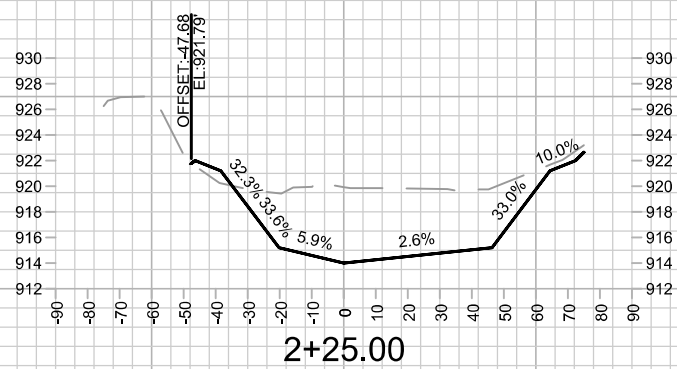
MARK	REVISION	DATE	BY
15697 <td>8/10/2025 2:37 PM <td></td> <td></td> </td>	8/10/2025 2:37 PM <td></td> <td></td>		

15697
MADISON, WI
9657
CONTRACT NO:

FOREBAY CROSS SECTION
STRICKER'S POND FOREBAY DREDGING
M:\DESIGN\Projects\15697\CAD\Storm\15697Storm.dwg



15697
X-1



15697
X-2

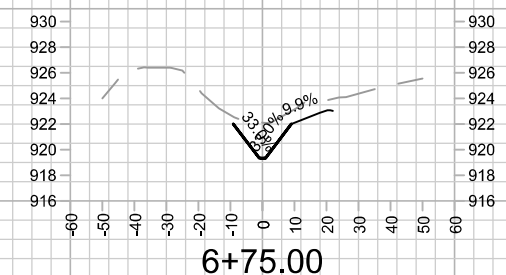
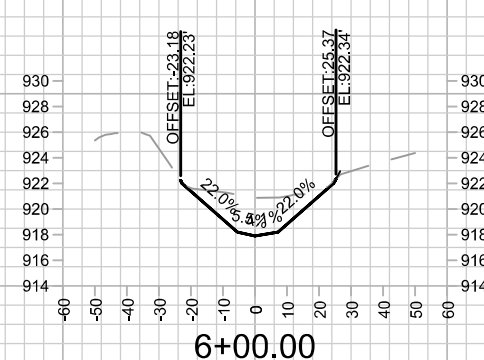
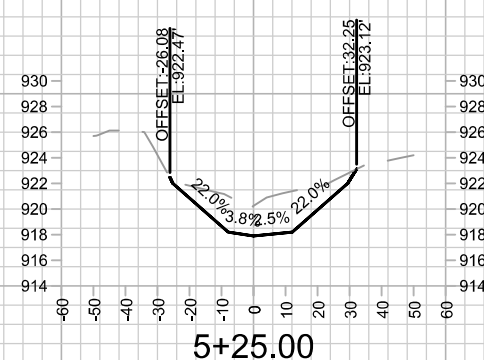
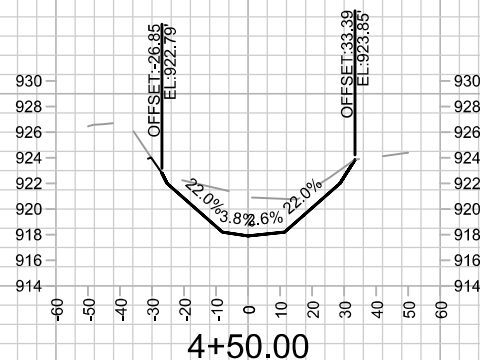
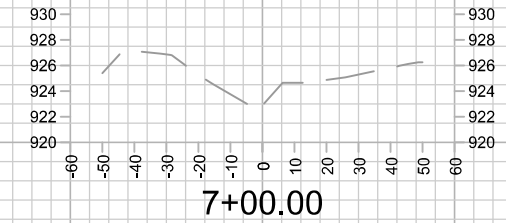
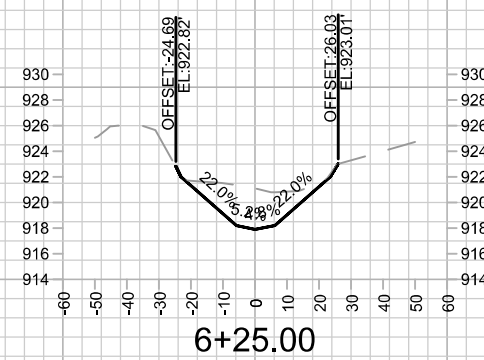
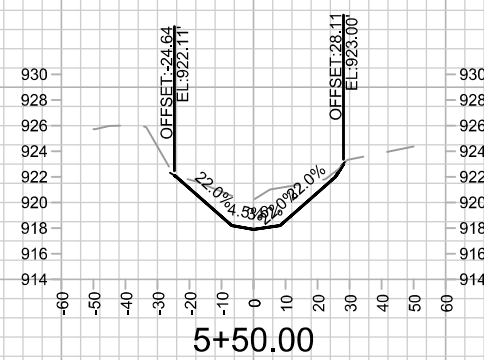
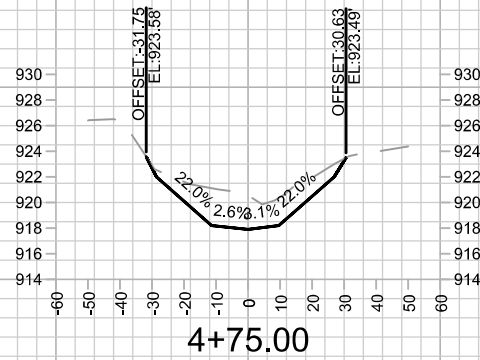
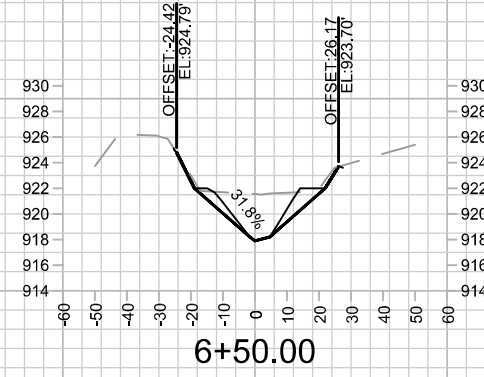
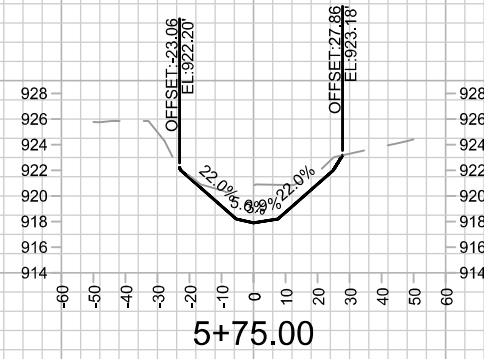
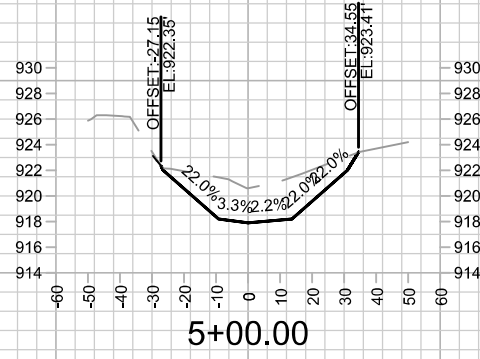
FOREBAY CROSS SECTION
STRICKER'S POND FOREBAY DREDGING

M:\DESIGN\Projects\15697\CAD\Storm\15697Storm.dwg

15697
MADISON, WI
CONTRACT NO: 9657

MARK	REVISION	DATE	BY

Designed By: SCL
Date: 8/10/2025 2:37 PM
Scale: 1:60
15697
X-2



MARK	REVISION	DATE	BY
15697 <td></td> <td>8/10/2025 2:38 PM <td></td> </td>		8/10/2025 2:38 PM <td></td>	

15697
MADISON, WI
9657
CONTRACT NO:

FOREBAY CROSS SECTION
STRICKER'S POND FOREBAY DREDGING
M:\DESIGN\Projects\15697\CAD\Storm\15697Storm.dwg



STRICKER'S POND

STRICKER'S PARK

MAINTENANCE LEGEND:

- = TERRACE REQUIRE MOWING BY CITY
- = SIDEWALK AND BIKE PATHS REQUIRE SNOW REMOVAL BY CITY
- = BUS STOP PAD REQUIRES SNOW REMOVAL BY CITY
- = CROSSWALK OR CONCRETE WATERWAY REQUIRE SNOW REMOVAL BY CITY
- = PRIVATELY MAINTAINED (MEDIANS, ISLAND, ROUNDABOUTS & PRIVATE OUTLOTS)
- = PUBLIC CITY ENGINEERING STORMWATER PROPERTY
- = PUBLIC CITY PARK PROPERTY
- = PRIVATE OUTLOT
- = PHASE BOUNDARY

SPECIAL FEATURES LEGEND:

- = SUSPENDED PAVEMENT SYSTEM
- = STORM WATER FEATURE
- = UNDERDRAIN

NOT FOR CONSTRUCTION - CITY RECORDS ONLY



STORMWATER FOREBAY MAINTAINED BY ENGINEERING WITHIN STRICKERS PARK

MAINTENANCE AREA IN PINK ECOLOGICAL RESTORATION TO BE MAINTAINED BY ENGINEERING (VIA CONTRACT) UNTIL END OF 2027

FOREBAY MAINTENANCE PATH, MAINTAINED BY ENGINEERING

MARK	REVISION	DATE	BY

15697
 MADISON, WI
 9657
 CONTRACT NO:

MN-1
 STRICKER'S FOREBAY DREDGE
 M:\DESIGN\Projects\15697\CAD\15697EN-Maintenance.dwg



15697
